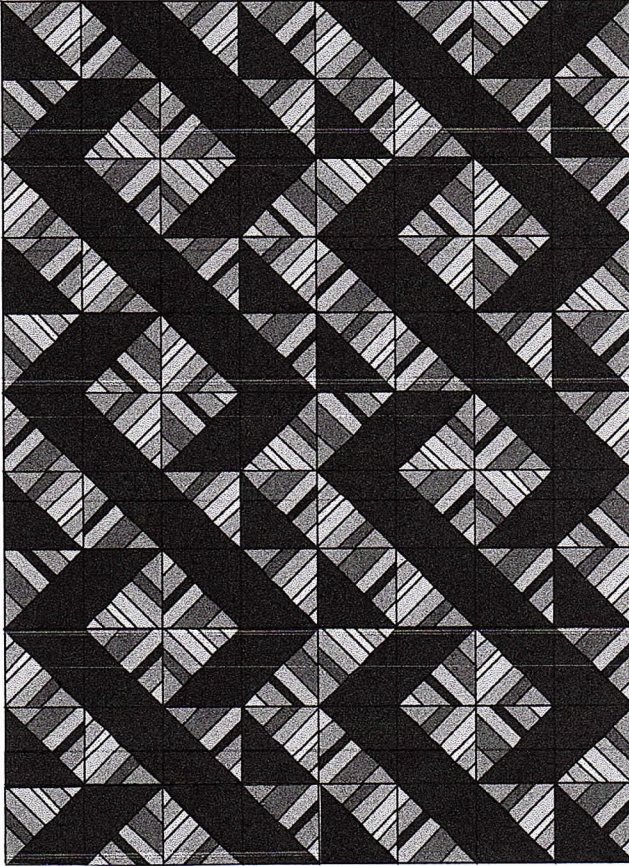


SCRAPPY HALF SQUARE TRIANGLE QUILT - ZIG ZAG LAYOUT



This quilt is 8 blocks wide and 11 rows long. The quilt measures 58" X 80". There are 88 blocks, each measures 7 ¼" square.

Background fabric: 2 ½ yards. You will need to cut 14 strips the width of fabric (WOF).

Be creative! Make each zig zag from a different background fabric. The longest zig zag is 10 blocks. From 1 WOF you will get 7 blocks, so for the longest zig zag, you will need 2 strips of background fabric. This should help you figure out how much background you will need for your design

Another possibility would be to use a striped fabric. The stripes most likely will run parallel to the selvage. You would need to cut your background strips lengthwise and you would probably want to have the same color stripe in the same position all the time. This would mean that you may lose some fabric to do this. Make sure you have more than 2 ½ yards to allow for this potential loss.

If you want to make the quilt longer, you would repeat the bottom 3 rows and add them to the bottom of the quilt. Each block measures 7 ¼" so you would be adding 21 ¾" to the length, bringing the total length to about 102".

Note that the quilt is 2 columns wide, each column measures 29". By making a 3rd column, you would have a quilt measuring 87" wide. If you want it wider still, copy column 1 on the left side and sew it to column 8 on the right side, and copy column 8 on the right side and sew it to column 1 on the left side. This adds 14 ½" to the width, making it 101". Now you have a square quilt. This is the size I personally like for a queen size bed.