



Show and Tell

January 2022

Meena Schaldenbrand

Escaping the Lockdown

Two Zero Two One is an international collaborative art project. “Experiences in Lockdown” explores the artist’s experiences in the worldwide lockdown since early 2020.

33 artists were selected and worked in groups of three to create three original artworks, and also an individual piece.

All artworks exhibited at TASMAI, in Pondicherry, India December 5 to 19, 2021.

Escaping The Lockdown is my individual art quilt.

During lockdown I felt like a caged bird and looked forward to escaping it. I coped with it by immersing myself in art and sewing. The windows and doors spell hope.

Materials: Canvas, cotton, lame, net, sheers, beads, sequins, ink, transparency

Techniques: applique, embossing, painting, hand embroidery and machine quilting, coloring tone on tone white background fabric with ink



Meena Schaldenbrand

Collaboration Lockdown Art #2: A Surreal Time

During lockdown, time seemed to drag on and on.
I left negative space for the 2 other artists to
continue this piece.

Mixed media: fabric, gears, washers and lock
washers

Side note:

This was mailed at end of August and still hope it
reaches the destination!



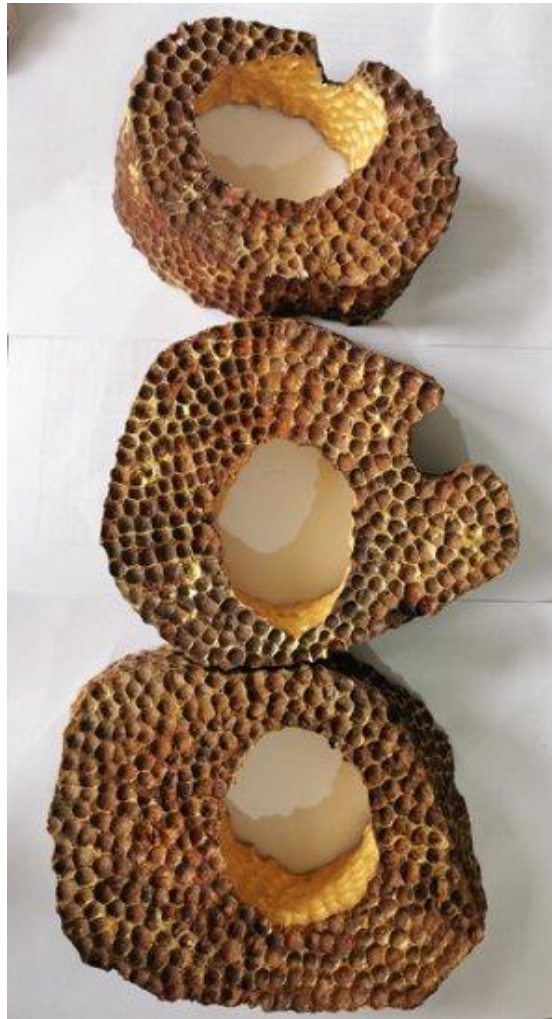
Meena Schaldenbrand

Collaboration Lockdown Sculpture Round Robin

Somen Debnath created a
stunning wood sculpture of 3
circles called Hope 19x9x8
inches

Malavika Mandal Andrew added
the wonderful digital collage lock.

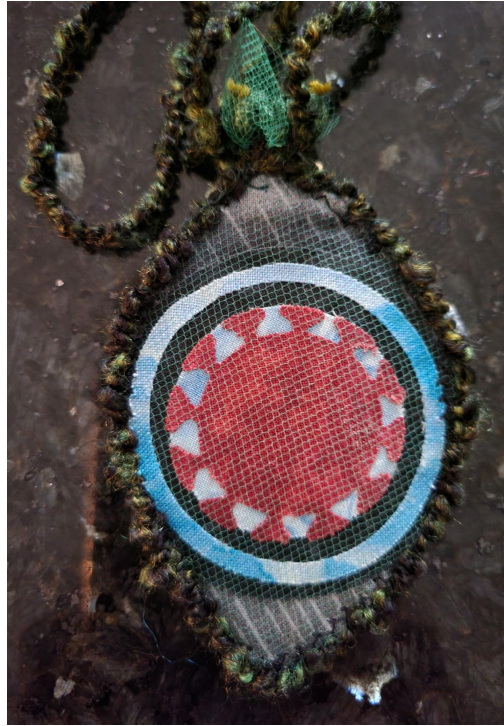
(continued on next slide)



Meena Schaldenbrand

I created two different two sided pieces to add above and below Malavika's lock in the holes of the circles so the viewer will get different points of view.

Side 1 Corona virus, Eye (layered with hexagonal net continuing the shape from the sculpture)



Side 2: Leaf with a light of hope, House (my upside down world where it is raining only under the umbrella inside the house!)

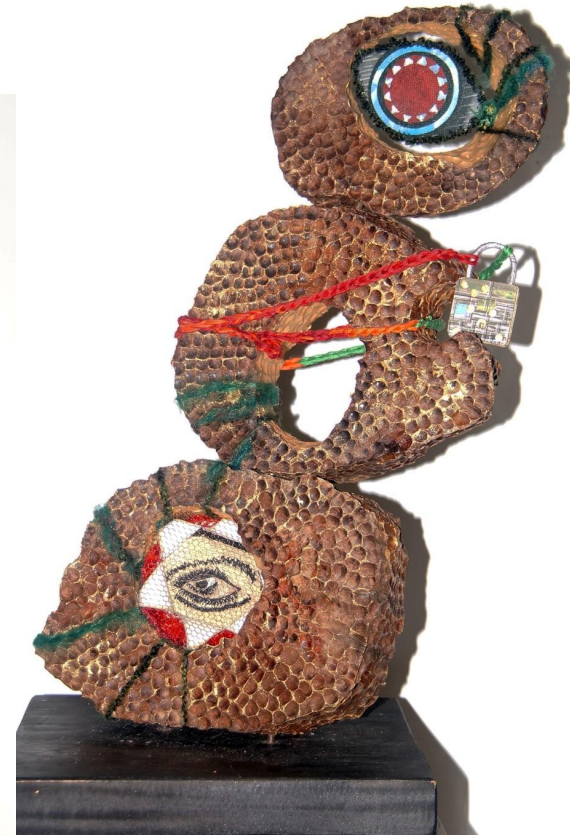


continued...

Meena Schaldenbrand

The 2 photos side by side show both sides of the finished sculpture with my 4 mini quilts inside.

This collaboration had to be done online via What's App because of the cost as well as the fragility of the art. They measured the 3D openings and I made 4 mini quilts as 2 double side work to fit the space and the theme.



Meena Schaldenbrand

Program Cover

Not only do we appreciate Meena's work, but the exhibit organizers appreciate it enough to put it on the program cover!



Rick Ware Mountain Man (8"x8")

Destinations with mountains are my favorite. Atop Whistler Mountain (elevation 7087 feet) in British Columbia, Canada, a very large stone version of the emblem of the 2010 Winter Olympic Games was erected above the site of the downhill skiing events. Its name is Ilanaaq and is based on the inukchuk of the Inuit and other Arctic peoples. Getting there starts on a train from Vancouver, an aerial tram shared with serious mountain bikers, a hike to the chair lift, then another hike to the summit after getting off the chair lift.

This work is based on my photo, minus people taking their obligatory selfie, I painted the sky on the white foundation fabric, then added fused applique' of commercial fabrics, many of which have a layer of felt added to create the illusion of depth. Raw edges of the applique' were machine sewn, as well as the quilting of the sky and distant mountains. "Snow" was added to the mountains with a fine-tip paint marker. The rail fence is rattail cord, hand sewn.



Submitted to Quilting Arts, but not published.

Rick Ware Milepost 195 (8"x8")

Train travel is my preferred mode, and seeing mountains along the way makes it even better.

This work is based on my photo taken at the rear of the last car as it is entering a tunnel deep in a canyon in western Colorado. Commercial fabrics were fused and machine quilted along the raw edges. Several types of decorative machine stitches were used to quilt the sheer cliffs of the canyon. The dark inside of the foreground tunnel was fused and machine quilted. The rails of the track were machine sewn, but the crossties are hand stitched with embroidery floss. Additional hand-stitching with variegated pearl cotton was added to the cliffs and the ground around the track.



See page 99 of Quilting Arts, Fall 2021, to see Rick's piece that WAS published.

Rick Ware Holly Heron (8"x10")

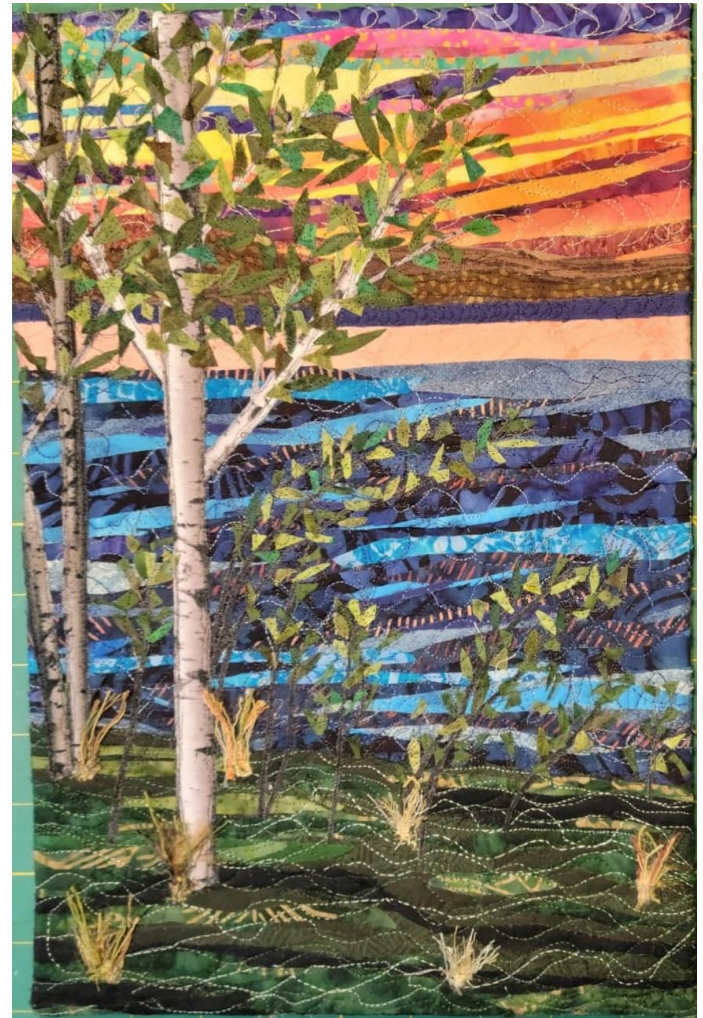
This is based on the technique of Michelle Dobrin who was an instructor at a previous Quilt University, although I attended her class through the Needlework and Textile Guild of Michigan. Her concept is to start with a small photograph printed on fabric then extending the scene with fabric fused to a foundation fabric, quilted, then mounted on a pre-framed artist canvas.

This work began with my photo taken at Holly State Recreation Area which was modified with software then printed onto fabric. Commercial fabrics were fused onto a foundation fabric then the printed photo was added on top. Machine quilting was added to hold everything together plus some decorative tall grass in the background. The middle yellow-green area was textured with hand stitching which I thought would look better than continuous lines of thread.



Sherri Sisung

This is a photo of a landscape I created in the Ann Loveless class. We were given the photo as inspiration.



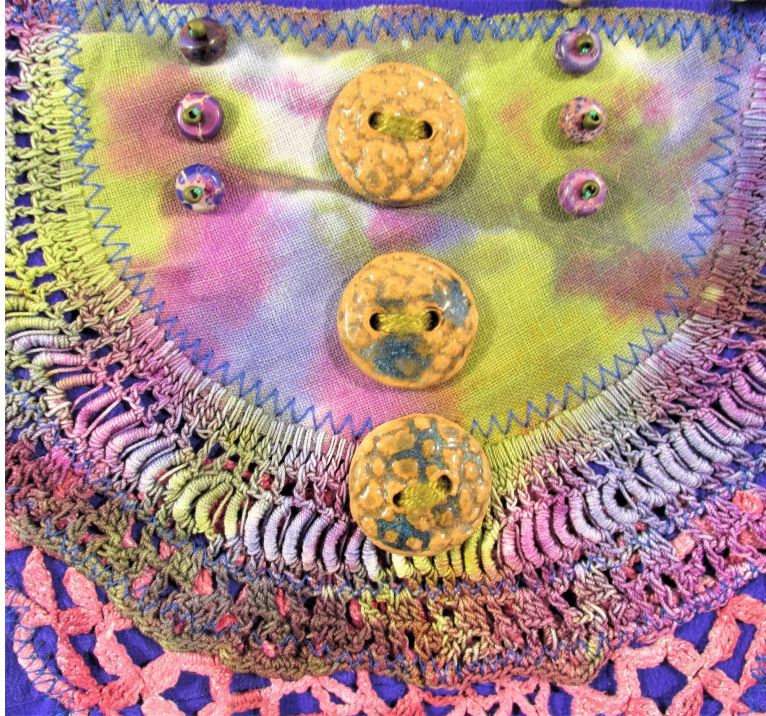
Jane Reiter

Ebullient

Inspiration: Moving forward with an optimistic and hopeful attitude, playing with color, texture, and pattern.



Jane Reiter Full of Spirit



Jane Reiter

Sunny Mandala



Emily Nietering

Summer Soiree

This was a block of the week online sew-along with Pat Sloan called “Summer Soiree” that ran from July through September 2021. It was fun to look forward to a new block pattern each week and use up some fabrics from my stash. Made by Emily Nietering and quilted by Morning Star Quilt Studio in Holly.



Susan Schwandt

The first of two Memorial Quilt commissions that I need to be finished by March 31



Susan Schwandt

Wintry birch tree scene made for
my boss as a Christmas gift



Susan Schwandt

Autumn wreath using the Lil' Twister tool -- echo leaf quilting design on the borders was inspired by a Leah Day tutorial



Susan Schwandt

Creative Seasons art quilters group Batik Fabric Challenge. I challenged myself to use all of the fabrics for this turtle quilt received during the fabric swap. The pattern is "Turtles, Turtles!" by Connie Spurlock and the piece is free-motion quilted with my own designs.



Susan Schwandt

GAAQG Ann Loveless mosaic tile workshop. Some of my fabrics didn't want to be cut into squares. I love her technique and will use it in more art quilts.



Katie McGrath

Early in the Year

29" x 29"

Hand-dyed burgundy and printed
whites



Pat Weber

8 August 2021 Skill Builder



detail



Pat Weber

9 September 2021 Skill Builder



Pat Weber

10 October 2021 Skill Builder



detail



Pat Weber

11 November 2021 Skill Builder



Pat Weber

Laura Heine Challenge
Christmas Stockings



Pat Weber

Fleur Couture from Maria
Shell Kitchen Sink Class

It includes blocks made in several
other classes offered thru GAAQG.



Liz Rodriguez

Rick's Aviator Quilt

I joined Nico's Quilt-Along last year and started with Cherrywood fabrics I had bought at the AQS show in Paducah back in 2013. For the back, I made a simplified star for the center and used Sister's Choice blocks around that. Rick is a fabulous brother-in-law, and my sister and her daughters were thrilled when they found out I was doing this for him.

Laura Jarvis at Kootsi Quilting did her magic with the quilting.



Back

Kim Huner
Liz Rodriguez
Wanda Snyder
Marge Venema

The Stars Aligned for Deb's Retirement

A group of us got together virtually over the summer to make this quilt for a beloved co-worker who is retiring at the end of January.

Laura Jarvis at Kootsi Quilting added her magic that really enhanced this keepsake.



Jane Clark

This Modern design (pieced by a customer) has been quilted using a very geometric pattern. You can see by the block close up and the backing that it is a chevron design. Quilting by Jane Clark

quilt4you.com



Jane Clark

Stained Glass

This stained glass style of quilt has a quilting design that gives great movement to the linear shapes in the quilt. It is quilted by Jane Clark of iquilt4you.com.



Jane Clark

Whole Cloth

This very large King size quilt was created using digital designs on solid cotton sateen fabric. While you cannot tell from the pictures, a colored thread was used to quilt the entire quilt. In one photo you see the entire quilt on the bed of my brother and sister-in-law. A close up of the quilting for the pillow shams is also included (next slide). This was a lot of fun to quilt! They were not expecting this gift so it was a total surprise.



Jane Clark Pillow Shams Close-up

